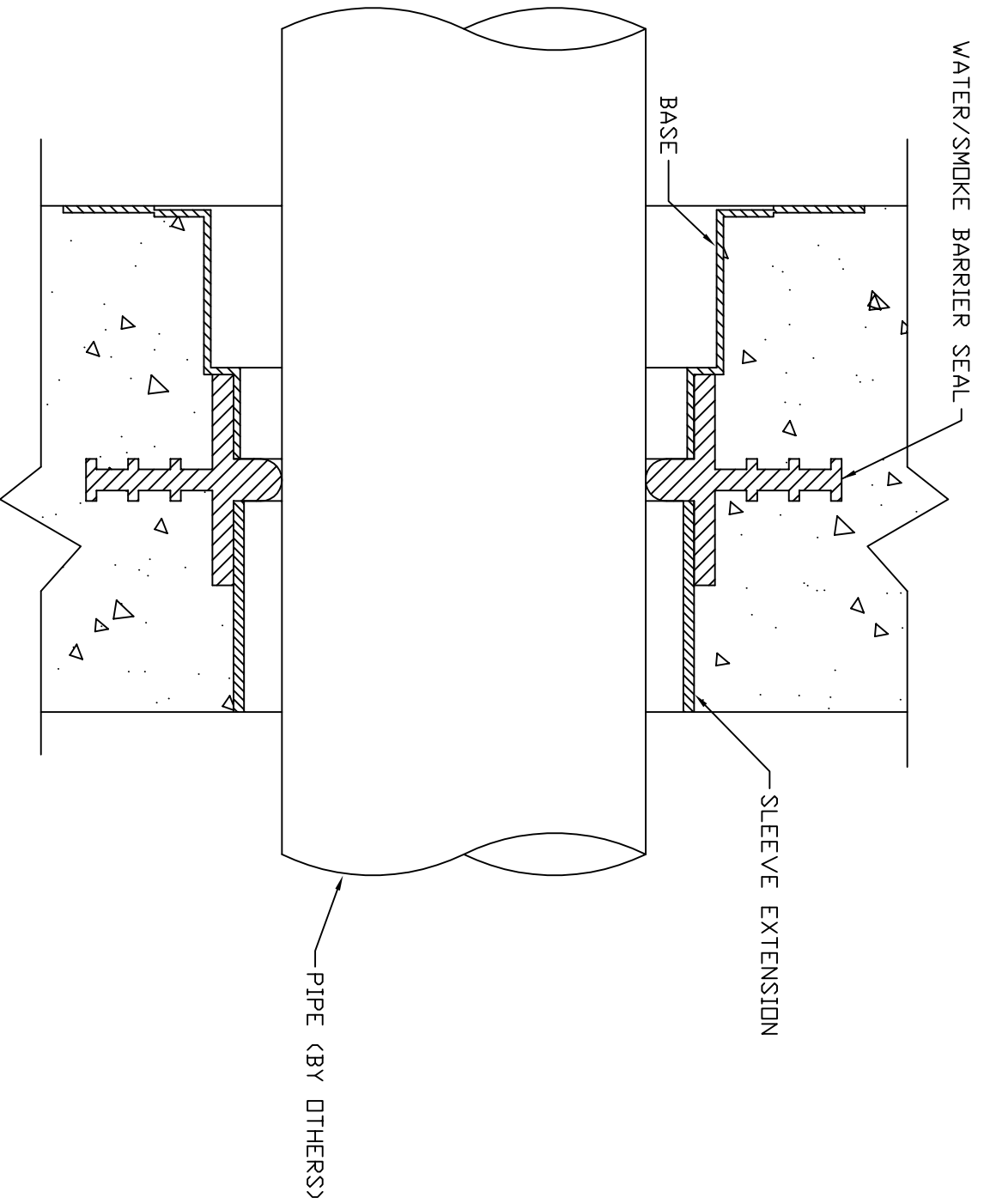


HOLDRITE HydroFlame
EXTERIOR CONCRETE WALL

Date: 11/02/07



(01) Exterior, Non-Rated wall, Water Tight Sleeve, w/base, B&W Detail

NOTE: Water/Smoke/Air tight, exterior pass-through Sleeve, Hydro-Preseal, with base for mounting to concrete forms. Make sure the pipe that passes through the water/smoke barrier seal is properly supported on each side of the wall to help keep the pipe centered in the water/smoke barrier seal and to help maintain a tight seal around the pipe.