

METALLIC CAST-IN-PLACE SLEEVE

For use in

- Dust and fiber free environments such as hospitals, computer centers and laboratories
- Concrete floor assemblies with flat form decks

Product Description

- HydroFlame sleeves offer fire and water protection for a variety of pipe sizes and types that pass through concrete floors in multi-story buildings.
- These one step sleeves are delivered to the job site completely assembled and need only be fastened to the form deck for final installation.
- HydroFlame sleeves appreciably reduce job time and material expenses by not requiring additional steps, such as cutting and caulking.
- Tested and approved by UL, FM
- OSHA compliant safety cap

Metallic Through Penetrants

1/2" - 6" pipe sizes: Steel Pipe, Iron Pipe, Conduit (Steel conduit or electrical metallic tubing), Copper
 Note: Please refer to Size chart for HydroFlame Cast-in-Place part numbers that are applicable to the correct pipe type and size.

Product Feature & Benefits

- Simple and quick installation
- Snug fit holds pipe in place
- Helps prevent water, fire, smoke, moisture & mold intrusion
- Reduces time to finish building by allowing dry in of bottom floors faster
- Helps eliminate rework due to water damage
- Sleeves are pre-cut at the factory to your specified height

Not for use in

- Walls

Safety & Precautions

- Keep this device out of reach of children
- Read the Material & Safety Data Sheet

Storage of Device

- Store in a covered or closed area protected from weather
- Do not stack devices on top of one another other than how they are shipped from manufacture



Technical Data for HYDROFLAME Firestop Device	
Physical Properties	
Color: Gray/Black	
Heat Expansion (Intumescence)	
Expansion begins:	410°F (210°C)
Significant expansion:	555°F (290°C)
Free expansion:	25 times (5 min @ 662°[350°C])
Weatherability (Tested to ASTM G23 and G53)	
Test Condition	Temperature/Humidity 90°F (32°C)/90%
Time	120 Days
After Exposure	No change in expansion
Surface Burning Characteristics (ASTM E84, UL 723)	
Flame spread index: 0	
Smoke development index: 5	
Testing Data	
UL Fire Tested & Listed to UL 1479 (ASTM E814) Standards	
UL Rated F,T,L & W	
Please refer to UL system F-A-1097, F-A-1107	

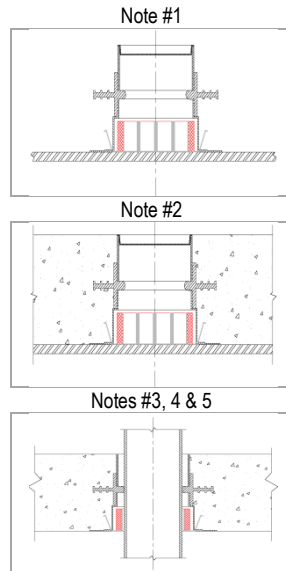


Installation Instructions

- (1) Select the correct sleeve for pipe type, size and concrete thickness. Align the hatch marks on lower base to layout lines on form deck to center the sleeve for the pipe that will penetrate through. Attach sleeve to deck with nails through the nail slots provided in the lower base. A minimum of four nails should be used when nailing down the device to form deck. Make sure the protective cap is securely inserted in the sleeve top before pouring concrete. **Note: It is recommended to use 6 penny nails through the nail slots to secure device to the deck. You may use appropriate staples to secure the device to form deck by straddling the nail slots on the edge of the base. DO NOT USE SCREWS TO SECURE THE DEVICE TO FORM DECK BECAUSE THE FORM DECK OR DEVICE COULD BE DAMAGED.** A Minimum of 4 holes should be used for nailing the sleeve to the wood form deck. Make sure the protective cap is securely inserted in the sleeve top before pouring concrete.
- (2) Pour the concrete slab around the device to the appropriate slab thickness.
- (3) As the form deck is removed after the appropriate concrete curing time has been accomplished, the nails can be pulled through the nail slots on the base, as designed. Remove the protective cap from the top portion of the device before inserting pipe.
- (4) Prior to installation, thoroughly clean the outside of the pipe to be inserted through the sleeve. The pipe must be free of concrete, dirt, paint, rust or anything protruding from the outside of pipe including burrs of pipe material. Make sure the mid-body seal membrane is clean of all debris, dirt, concrete or anything that might have gotten on the mid-body seal membrane during or after construction that could damage the sealing surface of the mid-body seal membrane when the pipe is inserted through the mid-body seal. Failure to perform proper cleaning could damage the mid-body seal membrane of the sleeve when the pipe is installed. Note: HOLDRITE HYDROFLAME is not responsible for sleeve performance when installation instructions are not followed.
- (5) After cleaning the debris from the surface of the pipe, it can now be inserted through the device.

Recommendations:

- a. Insert the pipe of choice up through the bottom of the device. Note: If circumstances arrive in the field, you may insert the pipe of choice down through the top of the device. Care should be taken to avoid coming in contact with the top of the fire ring tabs that hold the fire material in place in the lower section of the device.
- b. Use of the factory beveled end of the cast iron or steel pipe should be inserted through the device, if not, cast iron or steel pipe shall have a slight bevel applied to the end of pipe being inserted through the device to ease installation and minimize the possibility of damaging the mid-body seal membrane.
- c. Use a compatible soap solution or other recommended compatible lubricant to ease installation and further minimize the possibility of damaging the mid-body seal membrane. Lightly coating the mid-body seal center sealing surface will ease the insertion of pipe.



Product Submittal			
Job Name:		Architect/Owner:	
Date:		Contractor:	
Part#:	Qty:	Notes:	