

**CAST-IN-PLACE OPTIONAL PIPE SIZE SLEEVE**

**For Use With Nonmetallic Pipe Types**

**For use in**

- Dust and fiber free environments such as hospitals, computer centers and laboratories
- Concrete floor assemblies with flat form decks

**Product Description**

- HydroFlame sleeves offer fire and water protection for a variety of pipe sizes and types that pass through concrete floors in single and multi-story buildings
- These one step sleeves are delivered to the job site completely assembled and need only be fastened to the wood form deck for installation
- Tested and approved by UL
- OSHA compliant safety cap

**Nonmetallic Through Penetrants**

1/2" – 6" pipe sizes: ABS, ccABS, PVC, CPVC, ccPVC, RNC & PEX

**Product Feature & Benefits**

- Simple and quick installation
- Helps prevent water, fire, smoke, moisture & mold intrusion
- Each device excepts optional pipe size (1/2"-1"), (1 1/4"-2"), (2 1/2"-4") & (5"-6")
- Sleeves can be pre-cut at the factory, to your specified height

**Not for use in**

- Walls

**Safety & Precautions**

- Keep this device out of reach of children
- Read the Material & Safety Data Sheet

**Storage of Device**

- Store in a covered or closed area protected from weather
- Do not stack devices on top of one another other than how they are shipped from manufacture



**Technical Data for HYDROFLAME Firestop Material**

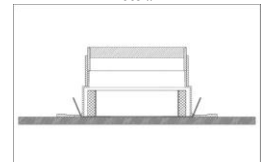
Physical Properties	
Color: Gray/Black	
Heat Expansion (Intumescence)	
Expansion begins:	410°F (210°C)
Significant expansion:	555°F (290°C)
Free expansion:	25 times (5 min @ 662°[350°C])
Weatherability (Tested to ASTM G23 and G53)	
Test Condition	Temperature/Humidity 90°F (32°C)/90%
Time	120 Days
After Exposure	No change in expansion
Surface Burning Characteristics (ASTM E84, UL 723)	
Flame spread index: 0	
Smoke development index: 5	
Testing Data	
UL Fire Tested & Listed to UL 1479 (ASTM E814) Standards	
UL Rated F,T,L & W	
Please refer to UL system F-B-2042	



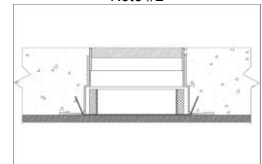
**Installation Instructions**

- (1) Lay out lines on the wood form deck for the appropriate location of sleeve; center sleeve with the hatch marks on the sleeve base with the layout lines on the wood form deck. **Note: It is recommended to use 6 penny nails through the nail slots to secure device to the deck. You may use appropriate staples to secure the device to form deck by straddling the nail slots on the edge of the base. DO NOT USE SCREWS TO SECURE THE DEVICE TO FORM DECK BECAUSE THE FORM DECK OR DEVICE COULD BE DAMAGED. A** Minimum of 4 holes should be used for nailing the sleeve to the wood form deck.
- (2) Before pouring of concrete slab, be sure the protective cap on top of sleeve is in place before concrete pour. Pour concrete around sleeve to the appropriate concrete thickness.
- (3) After concrete has cured remove wood form deck and the protective cap from the top portion of device before inserting pipe of choice.
- (4) Prior to installation, thoroughly clean the outside of the pipe to be inserted through the sleeve. The pipe must be free of concrete, dirt, paint, rust or anything protruding from the outside of pipe including burrs of pipe material. Make sure the inner seal membrane is clean of all debris, dirt, concrete, or anything that might have gotten on the inner seal membrane during or after construction that could damage the sealing surface of the inner seal membrane when the pipe is inserted through the inner seal membrane. Failure to perform proper cleaning could damage the inner seal membrane of the sleeve when the pipe is installed. **Note: HOLDRITE HydroFlame is not responsible for the sleeve performance when installation instructions are not followed.**
- (5) It is recommended inserting the pipe of choice up through the bottom of the device; this will allow the inner seal membrane to be pushed upward around the pipe of choice forming a complete seal around the pipe. After pipe has been inserted up through bottom of sleeve and properly supported on each side of sleeve assembly, pack mineral wool in top of sleeve around pipe approximately 2 inches in depth min. **Note:** If water seal is needed, compress mineral wool down into the top of the sleeve approximately 2" so there is a 1/4" from the top of sleeve to the top of mineral wool. To achieve water seal use 3M products FB-1000 NS, FB-3000 WT or FB-1003 SL sealant to fill the top of the packed mineral wool and around pipe to form a water tight seal. Sealant to lap a min 1/2" onto the top surface of concrete around perimeter of firestop device. Please refer to UL listing for full details. **Note: HOLDRITE HYDROFLAME is not responsible for sleeve performance when installation instructions are not followed.**

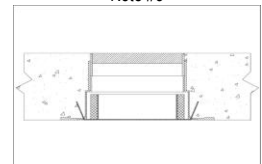
Note #1



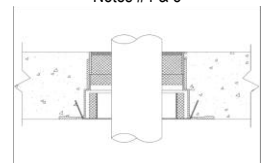
Note #2



Note #3



Notes #4 & 5



**Product Submittal**

Job Name:		Architect/Owner:	
Date:		Contractor:	
Part#:	Qty:	Notes:	